

# INDUSTRIAL FOLDING DOORS

BR600 MADE OF ALUMINIUM  
AND OF STEEL

- › AL601F 2.0
- › AL602F/SF
- › AL603F/SF
- › ST602F/SF
- › AL602RS

**FUNCTIONAL  
DESIGN**

[www.schneider.co.at](http://www.schneider.co.at)







# SCHNEIDER TORSYSTEME

## FUNCTIONAL DESIGN

**The company SCHNEIDER Torsysteme stands for high-quality industrial doors.**

The family business has been producing in Buchkirchen in the district of Wels-Land since 1989. The portfolio includes folding doors, sectional doors and roller doors made of aluminium and steel for industry, business enterprises, emergency response organisations and the public sector.

SCHNEIDER Torsysteme offers its customers everything from a single source, from planning via individual production up to assembly and customer services.

### Our profile rounds off a comprehensive range of services:

- › Personal advice
- › Europe-wide distribution
- › Production in Austria
- › Assembly
- › Maintenance
- › Service





# INDUSTRIAL FOLDING DOORS (F) / SLIDING FOLDING DOORS (SF)

BR600 made of aluminium and steel

## AL601F 2.0

Stable aluminium frame design



The basic model of SCHNEIDER aluminium folding doors AL601F 2.0 is a good option for smaller doors with lower frequency. SCHNEIDER aluminium folding doors are space-saving, and hardly any maintenance and upkeep costs are incurred, since a solid folding door has practically no wear-parts.

The possibility to individually design the door with numerous colours and patterns, among others the popular sun motif, makes SCHNEIDER folding doors also interesting for agricultural farmsteads and private properties.

### HIGHLIGHTS

- › Lightweight, stable design
- › High-tech material
- › Design depth: 60 mm
- › Area of application up to 10.4 m in width x 4.8 m in height
- › Screw- and plug-type connections



Learn more about the  
folding door AL601F 2.0.

## AL602F/SF

Standard model for versatile use



The solid SCHNEIDER aluminium folding door AL602F/SF combines high stability, lightness and longevity with high transparency. Solid running rails, hinges and corner connections enhance the high load capacity and thus also enable large glass panels.

Of course, the aluminium folding doors match all other aluminium doors and gates of the company SCHNEIDER.

### HIGHLIGHTS

- › More robust than AL601F 2.0
- › Up to 200,000 motion cycles
- › Design depth: 60 mm
- › Area of application up to 15.6 m in width x 5.6 m in height
- › Screw- and plug-type connections



Learn more about the  
folding door AL602F/SF.

## AL603F/SF

Energy efficiency, brightness and elegance



The innovative SCHNEIDER aluminium folding door AL603F/SF consists of specifically developed thermally separated profiles, which result in a substantially better thermal insulation than with normal profiles.

The AL603F/SF profiles are connected using a screw-/plug-type system, forming a door with high torsional stiffness. As with the AL602F/SF, solid running rails, hinges and corner connections enhance the high load capacity and thus also enable large glass panels.

### HIGHLIGHTS

- › Thermally separated aluminium profile
- › Triple glazing with a U-value of 0.6 W/m<sup>2</sup>K
- › Design depth: 60 mm
- › Continuous triple glazing up to 2 m<sup>2</sup>, max. height 4,200 mm
- › Area of application up to 15.6 m in width x 5.6 m in height
- › Reinforced adhesive joints at the frame corners



Learn more about the  
folding door AL603F/SF.

## ST602F/SF

High and wide doors in continuous use



Steel – one of the world's hardest materials. The SCHNEIDER steel folding door ST602F/SF supplements this basic strength with a solid steel frame design and the use of extremely stable running rails, hinges and corner connections. Thus, large door systems are produced, which are very robust, withstand high loads and continuous use, and additionally enable large glass panels.

For those requiring very high and wide doors in continuous use, the SCHNEIDER folding door ST602F/SF will be a good option.

### HIGHLIGHTS

- › Very robust
- › Proven in continuous use
- › Design depth: 60 mm
- › Area of application up to 15.6 m in width x 7 m in height
- › Welded and soldered connections



Learn more about the  
folding door ST602F/SF.





# AL601F 2.0

Basic model for small and medium-size doors

The basic model of SCHNEIDER aluminium folding doors AL601F 2.0 is a good option for smaller doors with lower frequency. SCHNEIDER aluminium folding doors are space-saving, and hardly any maintenance and upkeep costs are incurred, since a solid folding door has practically no wear-parts.

The possibility to individually design the door with numerous colours and patterns, among others the popular sun motif, makes SCHNEIDER folding doors also interesting for agricultural farmsteads and private properties.

## HIGHLIGHTS

- › Lightweight, stable design
- › High-tech material
- › Design depth: 60 mm
- › Area of application up to 10.4 m in width x 4.8 m in height
- › Screw- and plug-type connections

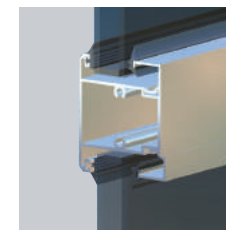


| Technical data                  | AL601F 2.0  |
|---------------------------------|---|
| Design depth                    | 60 mm   |
| Frame width                     | min. 87 mm  |
| max. door size (OW x OH)        | 10,400 x 4,800 mm   |
| max. leaf width                 | 1,300 mm  |
| Partition variants              | 2+0 / 2+1 / 2+2 / 3+0 / 3+1 / 3+2 / 3+3 / 4+0 / 4+1 / 4+2 / 4+3 / 4+4 |
| Door with active leaf (OW x OH) | 5,500 x 3,500 mm  |
| Built-in access door            | max. height 2,500 mm  |
| Insulating safety glass         | max. 2 m² per leaf  |
| Automatic opening               | possible with partition 2+2   |
| Resistance against wind load    | min. Class 2-5  |
| Watertightness                  | Class 0-3   |
| Airtightness                    | Class 0-3   |
| Thermal resistance              | on request  |
| Fire protection                 | Class 0   |
| Motion cycles                   | 150,000   |



## DOOR DESIGN AL601F 2.0

Stable aluminium frame design



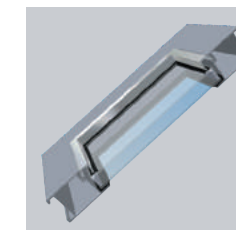
### Profile

- › Design depth: 60 mm
- › Frame width: min. 87 mm
- › Wall thickness of the profiles: min. 2-4 mm
- › Frame anodised with A6/C0 or high-quality powder coating possible



### Colour

- › Anodised with A6/C0
- › Powder coating in façade quality or highly weather-resistant
- + RAL at customer's choice
- + Metallic
- + Wood décor



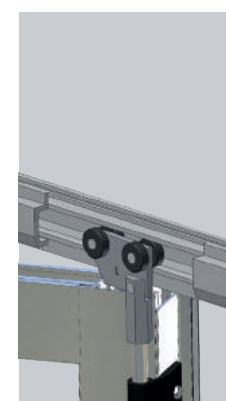
### Fillings

- › Double-walled panels
- + Aluminium panels: 42 mm
- + Steel ISO panels: 40 mm
- › Double-walled glazing or multi-skin sheets in different variants and thicknesses



### Operation

- › Manual
- › Fast automatic opening
- › E-drive Basic



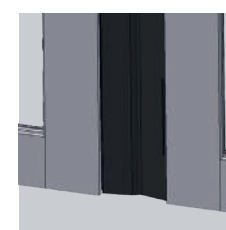
### Running rail

- › Of 5 mm thick aluminium profile anodised with A6/C0 or coated
- › Steel rail with 180° opening
- › Suspension of the door leaves on roller units with horizontal and vertical guide rollers
- › Integrated seal carrier with continuous lip sealing
- › Dust-proof, maintenance-free ball bearings
- › Opening angle: 90° or 180° (max. 3 leaves)
- › Rail remains clean, as it is only open towards the bottom
- › Ease of operation and smooth running



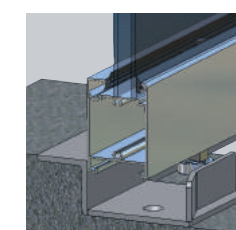
### Hinges

- › Hinge bolt stainless steel 16 mm
- › Hidden screwed aluminium hinges anodised with C35
- › Dust-proof thrust bearing between the hinge straps
- › Solid, adjustable, re-forgeable
- › Ease of operation, easy to replace, easily re-adjustable, no wear



### Finger-pinch protection

Safety with finger-pinch protection made of elastic non-decomposable EPDM rubber in all vertical closing edges, black



### Floor connection

- › Galvanised as standard
- › Threshold: L50 (Fig.), L50 NIRO, L50D, U50D
- › Without threshold: RA
- › Recessed floor guide: BF-light NIRO, BF-light NIRO heated
- › Threshold S10 with single seal



### Integrated door

- › Fast access to the hall without having to open the entire folding door.
- › Active leaf: entire door leaf with access function
- › Built-in access door: opening towards the outside with max. height 2,500 mm,
- › Threshold profile: max. 40 mm, low threshold\* possible

\*only with floor connection with tread angle and without rubber seal





# AL602F/SF

Standard model for versatile use

The solid SCHNEIDER aluminium folding door AL602F/SF combines high stability, lightness and longevity with high transparency. Solid running rails, hinges and corner connections enhance the high load capacity and thus also enable large glass panels.

In their visual appearance, the aluminium folding doors can be matched with all other aluminium doors and gates of the company SCHNEIDER.

## HIGHLIGHTS

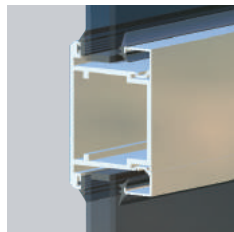
- › More robust than AL601F 2.0
- › Up to 200,000 motion cycles
- › Design depth: 60 mm
- › Area of application up to 15.6 m in width x 5.6 m in height
- › Screw- and plug-type connections



| Technical data                  | AL602F/SF   |
|---------------------------------|---|
| Design depth                    | 60 mm   |
| Frame width                     | min. 87 mm  |
| max. door size (OW x OH)        | 15,600 x 5,600 mm   |
| max. leaf width                 | 1,300 mm  |
| Partition variants              | 2+0 / 2+1 / 2+2 / 3+0 / 3+1 / 3+2 / 3+3 / 4+0 / 4+1 / 4+2 / 4+3 / 4+4 / 5+0 / 5+1 / 5+2 / 6+0 / 6+1 / 6+2 / 6+4 / 6+6 |
| Door with active leaf (OW x OH) | max. 5,500 x 3,500 mm   |
| Built-in access door            | max. height 2,500 mm  |
| Insulating safety glass         | max. 2 m <sup>2</sup> continuous per field  |
| Size of fully glazed doors      | max. 4,200 mm   |
| Automatic opening               | possible with partition 2+2   |
| Resistance against wind load    | min. Class 2-5  |
| Watertightness                  | Class 0-3   |
| Airtightness                    | Class 0-3   |
| Thermal resistance              | on request  |
| Fire protection                 | Class 0   |
| Motion cycles                   | 200,000   |

## DOOR DESIGN AL602F/SF

Stable aluminium frame design with highly rigid connections and extremely strong corner connections



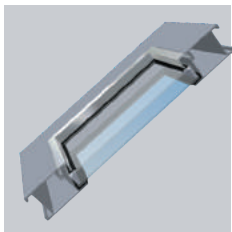
### Profile

- › Design depth: 60 mm
- › Frame width: min. 87 mm
- › Wall thickness of the profiles: min. 2-4 mm
- › Frame anodised with A6/C0 or high-quality powder coating possible



### Colour

- › Anodised with A6/C0
- › Powder coating in façade quality or highly weather-resistant + RAL at customer's choice
- › Metallic
- › Wood décor



### Fillings

- › Double-walled panels + Aluminium panels: 42 mm
- › + Steel ISO panels: 40 mm
- › Double-walled glazing or multi-skin sheets in different variants and thicknesses



### Operation

- › Manual
- › Fast automatic opening
- › E-drive Basic or Power-F



### Running rail

- › Of 5 mm thick aluminium profile anodised with A6/C0 or coated
- › Steel rail with 180 ° opening
- › Suspension of the door leaves on roller units with horizontal and vertical guide rollers
- › Integrated seal carrier with continuous lip sealing
- › Dust-proof, maintenance-free ball bearings
- › Opening angle: 90° or 180° (max. 3 leaves)
- › Rail remains clean, as it is only open towards the bottom
- › Ease of operation and smooth running



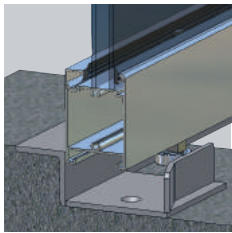
### Hinges

- › Hinge bolt stainless steel 20 mm
- › Hidden screwed aluminum hinges anodised with C35
- › Dust-proof thrust bearing between the hinge straps
- › Solid, adjustable, re-forgeable
- › Ease of operation, easy to replace, easily re-adjustable, no wear



### Finger-pinch protection

Safety with finger-pinch protection made of elastic non-decomposable EPDM rubber in all vertical closing edges, black



### Floor connection

- › Galvanised as standard
- › Threshold: L50, L50 NIRO, L50D (Fig.), U50D
- › Without threshold: RA
- › Recessed floor guide: BF, BF heated, BF-light NIRO, BF-light NIRO heated
- › Threshold S10 with single seal



### Integrated door

- › Fast access to the hall without having to open the entire folding door.
- › Active leaf: entire door leaf with access function
- › Built-in access door: opening towards the outside with max. height 2,500 mm,
- › Threshold profile: max. 40 mm, low threshold\* possible

\*only with floor connection with tread angle and without rubber seal





# AL603F/SF

Energy efficiency, brightness and elegance

The innovative SCHNEIDER aluminium folding door AL603F/SF consists of specifically developed thermally separated profiles, which result in a substantially better thermal insulation than with normal profiles. The AL603F/SF profiles are connected using a screw-plug-type system, forming a door with high torsional stiffness. As with the AL602F/SF, solid running rails, hinges and corner connections enhance the high load capacity and thus also enable large glass panels.

### HIGHLIGHTS

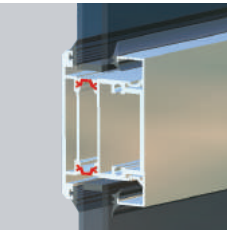
- › Thermally separated aluminium profile
- › Triple glazing with a U-value of 0.6 W/m²K
- › Continuous triple glazing up to 3 m², max. height 3,200 mm
- › Area of application up to 15.6 m in width x 5.6 m in height
- › Reinforced adhesive joints at the frame corners



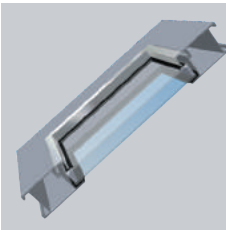
| Technical data                  | AL603F/SF   |
|---------------------------------|---|
| Design depth                    | 60 mm   |
| Frame width                     | min. 87 mm  |
| max. door size (OW x OH)        | 15,600 x 5,600 mm   |
| max. leaf width                 | 1,300 mm  |
| Partition variants              | 2+0 / 2+1 / 2+2 / 3+0 / 3+1 / 3+2 / 3+3 / 4+0 / 4+1 / 4+2 / 4+3 / 4+4 / 5+0 / 5+1 / 5+2 / 6+0 / 6+1 / 6+2 / 6+4 / 6+6 |
| Door with active leaf (OW x OH) | max. 5,500 x 3,000 mm   |
| Built-in access door            | max. height 2,500 mm  |
| Insulating safety glass         | max. 2 m² continuous per field  |
| Size of fully glazed doors      | max. 4,200 mm   |
| Automatic opening               | possible with partition 2+2   |
| Resistance against wind load    | min. Class 2-5  |
| Watertightness                  | Class 0-3   |
| Airtightness                    | Class 0-3   |
| Thermal resistance              | on request  |
| Fire protection                 | Class 0   |
| Motion cycles                   | 150,000   |

## DOOR DESIGN AL603F/SF

Stable aluminium frame design with highly rigid connections, extremely strong corner connections and thermal separation



- Profile**
- › Thermally separated
  - › Design depth: 60 mm
  - › Frame width: min. 87 mm
  - › Wall thickness of the profiles: min. 2-4 mm
  - › Frame anodised with A6/C0 or high-quality powder coating possible



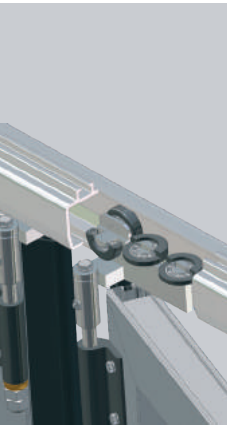
- Fillings**
- › Double-walled panels + Aluminium panels: 42 mm + Steel ISO panel: 40 mm
  - › Double-walled and/or triple glazing or multi-skin sheets in different variants and thicknesses



- Colour**
- › Anodised with A6/C0
  - › Powder coating in façade quality or highly weather-resistant + RAL at customer's choice + Metallic + Wood décor



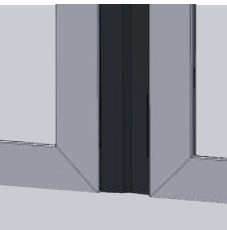
- Operation**
- › Manual
  - › Fast automatic opening
  - › E-drive Basic or Power-F



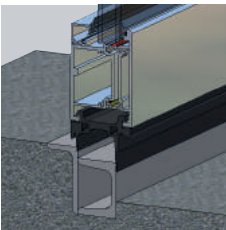
- Running rail**
- › Of 5 mm thick aluminium profile anodised with A6/C0 or coated
  - › Steel rail with 180° opening
  - › Suspension of the door leaves on roller units with horizontal and vertical guide rollers
  - › Integrated seal carrier with continuous lip sealing
  - › Dust-proof, maintenance-free ball bearings
  - › Opening angle: 90° or 180° (max. 3 leaves)
  - › Rail remains clean, as it is only open towards the bottom
  - › Ease of operation and smooth running



- Hinges**
- › Hinge bolt stainless steel 20 mm
  - › Hidden screwed aluminum hinges anodised with C35
  - › Dust-proof thrust bearing between the hinge straps
  - › Solid, adjustable, re-forgeable
  - › Ease of operation, easy to replace, easily re-adjustable, no wear



- Finger-pinch protection**
- Safety with finger-pinch protection made of elastic non-decomposable EPDM rubber in all vertical closing edges, black



- Floor connection**
- › Galvanised as standard
  - › Threshold: L50, U50D, double bracket (Fig.)
  - › Recessed floor guide: BF, BF heated, BF-light NIRO, BF-light NIRO heated



- Integrated door**
- › Fast access to the hall without having to open the entire folding door.
  - › Active leaf: entire door leaf with access function
  - › Built-in access door: opening towards the outside with max. height 2,500 mm,
  - › Threshold profile: max. 40 mm, low threshold possible





# ST602F/SF

High and wide doors in continuous use

Steel – one of the world's hardest materials. The SCHNEIDER steel folding door ST602F/SF supplements this basic strength with a solid steel frame design and the use of extremely stable running rails, hinges and corner connections. Thus, large door systems are produced, which are very robust, withstand high loads and continuous use, and additionally enable large glass panels. For those requiring very high and wide doors in continuous use, the SCHNEIDER folding door ST602F/SF will be a good option.

## HIGHLIGHTS

- › Very robust
- › Proven in continuous use
- › Design depth: 60 mm
- › Area of application up to 15.6 m in width x 7 m in height
- › Welded and soldered connections



| Technical data                  | ST602F/SF   |
|---------------------------------|---|
| Design depth                    | 60 mm   |
| Frame width                     | min. 95 mm  |
| max. door size (OW x OH)        | 15,600 x 7,000 mm   |
| max. leaf width                 | 1,300 mm  |
| Partition variants              | 2+0 / 2+1 / 2+2 / 3+0 / 3+1 / 3+2 / 3+3 / 4+0 / 4+1 / 4+2 / 4+3 / 4+4 / 5+0 / 5+1 / 5+2 / 6+0 / 6+1 / 6+2 / 6+4 / 6+6 |
| Door with active leaf (OW x OH) | max. 5,500 x 3,500 mm   |
| Built-in access door            | max. height 2,500 mm  |
| Insulating safety glass         | max. 4 m <sup>2</sup> continuous per field  |
| Size of fully glazed doors      | max. 5,500 mm   |
| Automatic opening               | possible with partition 2+2   |
| Resistance against wind load    | min. Class 2-5  |
| Watertightness                  | Class 0-3   |
| Airtightness                    | Class 0-3   |
| Thermal resistance              | on request  |
| Fire protection                 | Class 0   |
| Motion cycles                   | 200,000   |

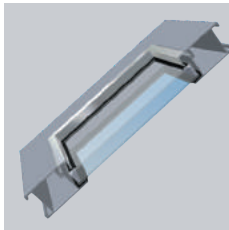


## DOOR DESIGN ST602F/SF

Solid steel frame design, mitred, made of hot-dip galvanised steel profiles



- Profile**
- › Design depth: 60 mm
  - › Frame width: min. 95 mm
  - › Wall thickness of the profiles: min. 2-4 mm
  - › Hot-dip galvanised steel frame; high-quality powder coating possible



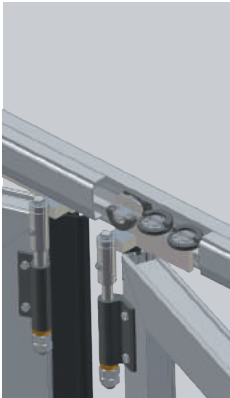
- Fillings**
- › Double-walled steel ISO panels: 42 mm
  - › Double-walled glazing or multi-skin sheets in different variants and thicknesses



- Colour**
- › Galvanised steel
  - › Powder coating in façade quality or highly weather-resistant + RAL at customer's choice + Metallic



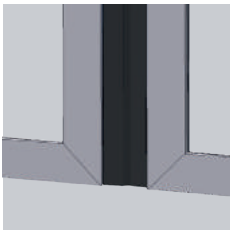
- Operation**
- › Manual
  - › Fast automatic opening
  - › E-drive Basic or Power-F



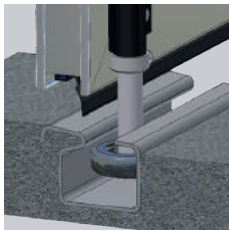
- Running rail**
- › Of 5 mm thick aluminium sheath and steel rail
  - › Suspension of the door leaves on roller units with horizontal and vertical guide rollers
  - › Integrated seal carrier with continuous lip sealing
  - › Dust-proof, maintenance-free ball bearings
  - › Opening angle: 90° or 180° (max. 3 leaves)
  - › Rail remains clean, as it is only open towards the bottom
  - › Ease of operation and smooth running



- Hinges**
- › Hinge bolt stainless steel 20 mm
  - › Invisibly screwed aluminium hinges anodised with C35
  - › Dust-proof thrust bearing in brass housing
  - › Solid, adjustable, re-forgeable
  - › Ease of operation, easy to replace, easily re-adjustable, no wear



- Finger-pinch protection**
- Safety with finger-pinch protection made of elastic non-decomposable EPDM rubber in all vertical closing edges, black



- Floor connection**
- › Galvanised as standard
  - › Threshold: L50, L50 NIRO, L50D, U50D
  - › Without threshold: RA
  - › Recessed floor guide: BF (Fig.), BF heated, BF-light NIRO, BF-light NIRO heated



- Integrated door**
- › Fast access to the hall without having to open the entire folding door.
  - › Active leaf: entire door leaf with access function
  - › Built-in access door: opening towards the outside with max. height 2,500 mm,
  - › Threshold profile: max. 40 mm, low threshold\* possible

\*only with floor connection with tread angle and without rubber seal



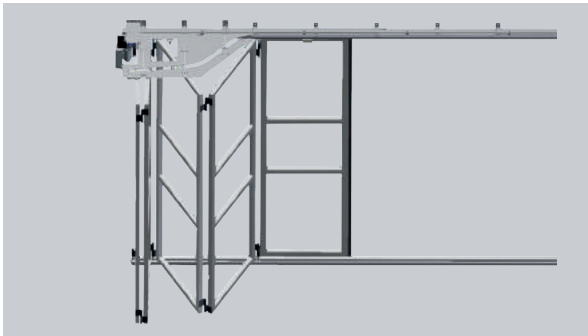


# SLIDING FOLDING DOORS

The folding door with special guiding system

Especially for large door openings and with respective wind loads, sliding folding doors represent the ideal alternative to folding doors.

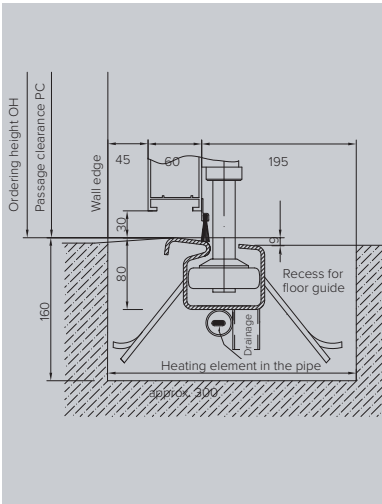
SCHNEIDER is capable of manufacturing the most different variants, in order to fulfil the tough requirements in industrial use. At the same time, however, all the design possibilities of a folding door are also available. Sliding folding doors completely open up the opening clearance.



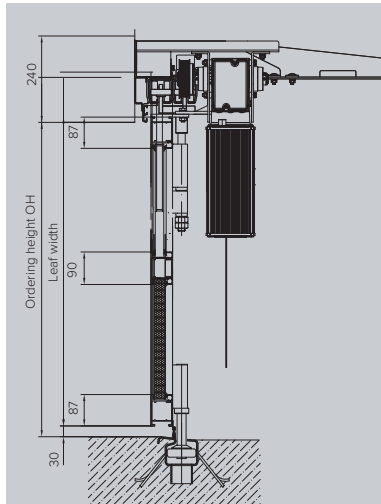
| Technical data                                | AL602SF   | AL603SF   | ST602SF   |
|---|---|---|---|
| Frame   | Aluminium   | Aluminium, thermally separated  | Steel   |
| Design depth                                  | min. 60 mm  | min. 60 mm  | min. 60 mm  |
| Profile width                                 | min. 87 mm  | min. 87 mm  | min. 95 mm  |
| max. door size (OW x OH)                      | 15,600 x 5,600 mm   | 15,600 x 5,600 mm   | 15,600 x 7,000 mm   |
| max. leaf width                               | 1,300 mm  | 1,300 mm  | 1,300 mm  |
| Partition variants                            | 2+0 / 2+2 / 2+4 / 2+6 / 4+0 / 4+2 / 4+4 / 4+6 / 6+0 / 6+2 / 6+4 / 6+6 | 2+0 / 2+2 / 2+4 / 2+6 / 4+0 / 4+2 / 4+4 / 4+6 / 6+0 / 6+2 / 6+4 / 6+6 | 2+0 / 2+2 / 2+4 / 2+6 / 4+0 / 4+2 / 4+4 / 4+6 / 6+0 / 6+2 / 6+4 / 6+6 |
| Built-in access door                          | max. height 2,500 mm  | max. height 2,500 mm  | max. height 2,500 mm  |
| Insulating safety glass                       | max. 2 m <sup>2</sup> continuous per field                            | max. 2 m <sup>2</sup> continuous per field                            | max. 4 m <sup>2</sup> continuous per field                            |
| Size of fully glazed doors                    | max. 4,200 mm   | max. 4,200 mm   | max. 5,500 mm   |
| Sliding folding door drive with control TS971 | possible in dead man mode or self-retained                            | possible in dead man mode or self-retained                            | possible in dead man mode or self-retained                            |
| Resistance against wind load                  | min. Class 2-5  | min. Class 2-5  | min. Class 2-5  |
| Watertightness                                | Class 0-3   | Class 0-3   | Class 0-3   |
| Airtightness                                  | Class 0-3   | Class 0-3   | Class 0-3   |
| Thermal resistance                            | on request  | on request  | on request  |
| Fire protection                               | Class 0   | Class 0   | Class 0   |
| Motion cycles                                 | 200,000   | 150,000   | 200,000   |

## TECHNICAL DETAILS SLIDING FOLDING DOORS

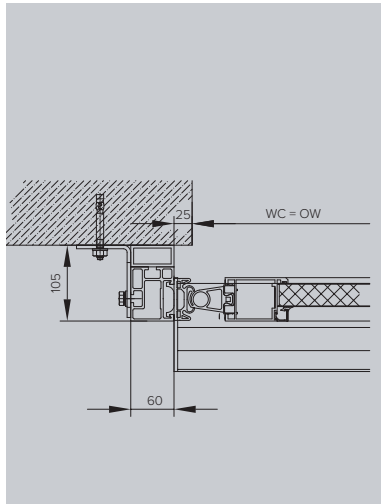
Floor connection



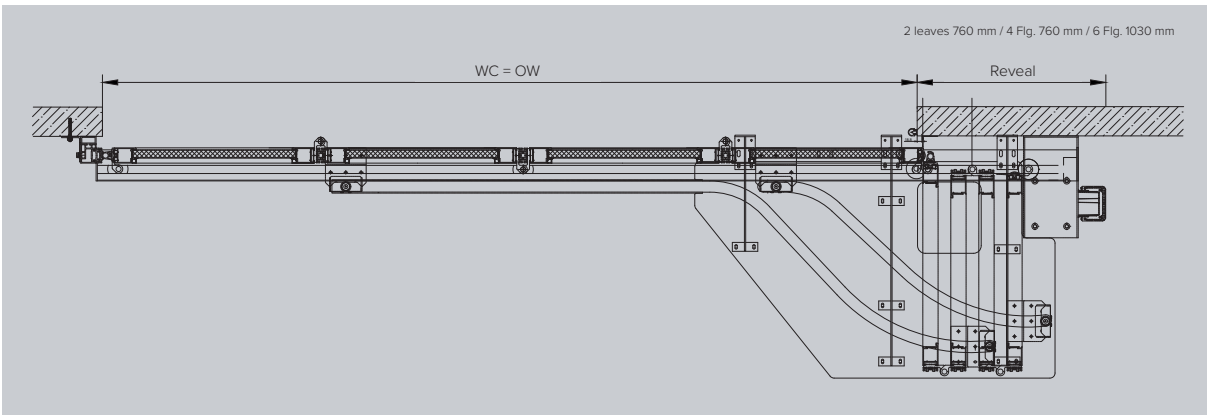
Vertical section



Wall mounting



Horizontal section



## SLIDING FOLDING DOOR DRIVE POWER-SF

|  |                    |   |
|--|--------------------|---|
|  | Applicable for     | AL602SF, AL603SF, ST602SF   |
|  | Supply voltage     | 400 V   |
|  | Output max.        | 0,85 kW   |
|  | Opening speed      | approx. 40 cm/s   |
|  | Times opening/day  | max. 100 times  |
|  | Leaf width         | max. 1,300 mm   |
|  | Leaf height        | max. 5,600 mm (aluminium doors)<br>max. 7,000 mm (steel doors)        |
|  | Partition variants | 2+0 / 2+2 / 2+4 / 2+6 / 4+0 / 4+2 / 4+4 / 4+6 / 6+0 / 6+2 / 6+4 / 6+6 |
|  | Type of protection | IP65  |
|  | Control            | Dead man, self-retained, two-way traffic                              |

- Motor/transmission unit in robust drive housing made of light metal casting
- Sliding folding door runs smoothly and quietly
- Self-locking transmission unit
- Suitable for high frequency
- Automatic door closing can be switched on, with individual time setting
- Drive unlocking in case of power failure with rope pull from the floor
- Digital limit switch for limitation of travel
- Dead man: button OPEN - STOP - CLOSE
- Self-retention: button OPEN - STOP - CLOSE, closing edge safety device, flashing light
- Two-way traffic: button OPEN - STOP - CLOSE, closing edge safety device, one-way (traffic light red) or two-way traffic light control (traffic light red/green)





# AL602RS

Circular track sliding door – the alternative

The alternative to folding doors or sliding folding doors, when there is not enough space for side trackage of the door leaves. Aluminium circular track sliding door with frame-lattice design. Design depth of 60 mm. Wall thickness of at least 2 mm. Frame profiles are connected to the sliding door elements by means of double bolts. Pressed-in aluminium component as a static connecting element. The door elements are suspended by horizontally-guided roller units and plastic-covered track rollers. The track rollers and door leaves are supported by dust-proof, maintenance-free ball bearings. Covered bolt lock. Creating an opening for people to pass through occurs with no loss in stability. Filling with aluminium panels or insulating glass. All the door components can be easily replaced without damaging other components!

## HIGHLIGHTS

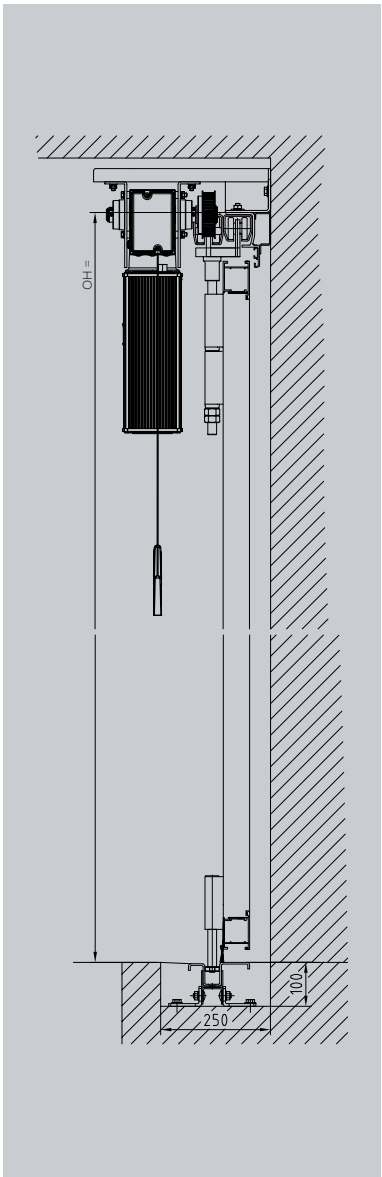
- › No blocked off areas due to parked door leaves in front of openings in the hall's interior or the outside area
- › Architectural design options as with folding door
- › Partial opening possible without any problem
- › Low lintel requirement
- › Existing wall clearance as remaining passage clearance

| Technical data               | AL602RS   |
|------------------------------|---|
| Frame                        | Aluminium   |
| Design depth                 | min. 60 mm  |
| Profile width                | min. 87 mm  |
| max. door size               | 12,000 x 5,600 mm   |
| max. leaf width              | 900 mm  |
| Partition variants           | 2+0 / 2+2 / 3+0 / 3+3 / 4+0 / 4+4 / 5+0 / 5+5 / 6+0 / 6+6 |
| Built-in access door         | max. height 2,500 mm                                      |
| Insulating safety glass      | max 2 m² continuous per field                             |
| Size of fully glazed door    | max. 4,200 mm   |
| Drive                        | possible in dead man mode or self-retained                |
| Resistance against wind load | min. Class 2-5  |
| Watertightness               | Class 0-3   |
| Airtightness                 | Class 0-3   |
| Thermal resistance           | on request  |
| Fire protection              | Class 0   |
| Motion cycles                | 200,000   |

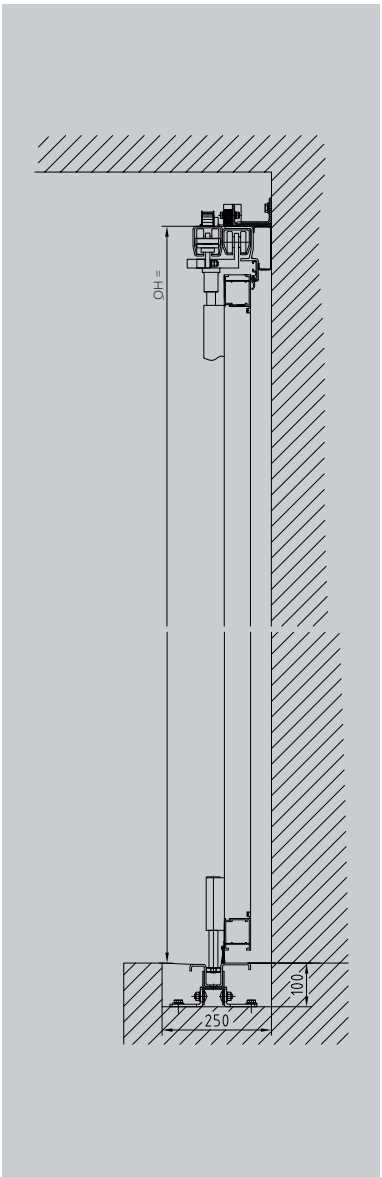


## TECHNICAL DETAILS CIRCULAR TRACK SLIDING DOOR

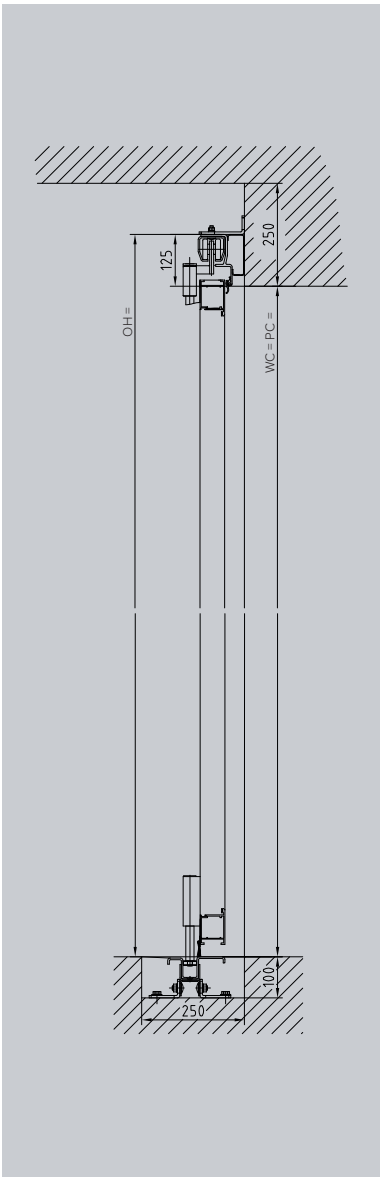
Vertical section drive



Vertical section tensioner



Vertical section running rail



### Sizes:

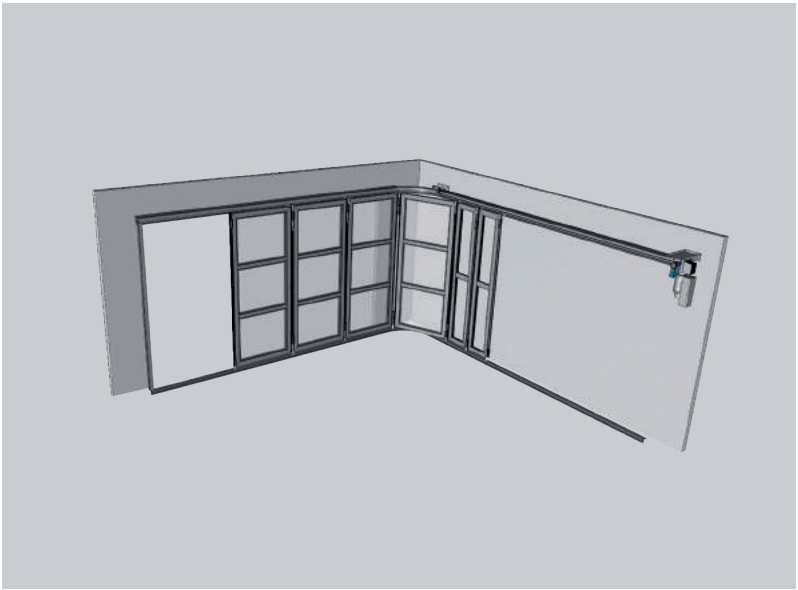
- › max. door width 12,000 mm (max. element width 1,200 mm)
- › Max. leaf height 5,600 mm

### Surface:

- › Powder-coated in façade quality, RAL at customer's choice
- › Anodised with A6/C0

### Operation:

- › Manual
- › Power-operated with sliding door drive





# TECHNOLOGY & DRIVES

## Details

### PANELS



SCHNEIDER folding doors consist of a stable frame design. This is filled with double-walled filling elements in sandwich construction with clamped aluminium holding strips and sealing rubber on the inside, whereby the filling elements can be easily replaced. Depending on the door type, the following panel variants are available:

**Aluminium panels (42 mm) for AL601F 2.0 / AL602F/SF**

**Aluminium panels (42 mm) for AL603F/SF:** Aluminium elements filled with Ökopor® panels; surface: smooth, stucco; standard anodised and natural aluminium; or smooth, colour Edelweiß (white); special coatings with high-quality powder coating in RAL colours\* or metallic and wood décor and/or highly weather-resistant; individual design possible (sun, fishbone, ...)

**ISO panels (40 mm) for AL601F 2.0 / AL602F/SF / AL603F/SF:** Steel sheet elements filled with rigid PUR foam,  $g = 45 \text{ kg/m}^3$ ; smooth, small wave, stucco bead, painted in numerous standard colours, special painting possible

**Steel panels (42 mm) for ST602F/SF:** Steel elements filled with Ökopor®; standard steel galvanised, special coatings with high-quality powder coating in RAL colours\* or metallic décor in façade quality and/or highly weather-resistant; \*(except for luminous and pearl colours)

### GLAZING



The genuine or plastic glazing is a double-walled filling as dry glazing. It is fastened using clamped aluminium holding strips with EPDM rubber. Thus it provides high tightness, is easy to replace, easy to repair, and easy to clean.

- Depending on the type of glass, the following versions are available in clear, pearled or satin-finish:**
- › Insulating genuine glass, double ESG safety glass,  $U = 1.1 \text{ W/m}^2\text{K}$  or  $U = 2.9 \text{ W/m}^2\text{K}$
  - › Insulating genuine glass, triple ESG safety glass,  $U = 0.6 \text{ W/m}^2\text{K}$  (not for AL601F 2.0)
  - › Laminated safety glass,  $U = 1.1 \text{ W/m}^2\text{K}$  or  $U = 2.9 \text{ W/m}^2\text{K}$  (not for AL601F 2.0)
  - › Plastic glass acryl, SAN and SAN Hard
  - › Multi-skin sheets Sp3

- The following applies to the respective door types:**
- › AL601F 2.0: max.  $2 \text{ m}^2$  of glazing per leaf
  - › AL602F/SF: max.  $2 \text{ m}^2$  of continuous glazing per field; fully glazed doors max. 4,200 mm in height
  - › AL603F/SF: max.  $2 \text{ m}^2$  of continuous glazing per field; fully glazed doors max. 4,200 mm in height
  - › ST602F/SF: max.  $4 \text{ m}^2$  of continuous glazing per field; fully glazed doors max. 5,500 mm in height

### SIZE RANGE FOLDING DOOR / SLIDING FOLDING DOOR

| Type                   | AL601F 2.0        | AL602F/SF         | AL603F/SF                     | ST602F/SF         |
|------------------------|-------------------|-------------------|-------------------------------|-------------------|
| Material               | Aluminium         | Aluminium         | Aluminium thermally separated | Steel             |
| max. door size OW x OH | 10,400 x 4,800 mm | 15,600 x 5,600 mm | 15,600 x 5,600 mm             | 15,600 x 7,000 mm |
| max. leaf width        | 1,300 mm          | 1,300 mm          | 1,300 mm                      | 1,300 mm          |

### ACCESS DOOR AND FLOOR RUNNING RAIL



**Access door with low threshold**  
An access door with a low threshold facilitates safe and unhindered passage in both directions, without having to open the entire folding door.



**Heated floor running rails with solid track rollers**  
The selection of floor running rails ranges from the simple standard solution with a threshold via variants without threshold up to a heated floor running rail, which reliably protects the sliding mechanism from freezing. For sealing, there is a choice from single and double lip sealing and a brush finish.

**SPECIAL SOLUTIONS**  
Not every application can be covered with a standard solution. Our qualified and innovative employees will find an optimal folding door solution for your respective installation situation, too.



# TECHNOLOGY & DRIVES

## Details

### MANUAL OPERATION UND FAST AUTOMATIC OPENING

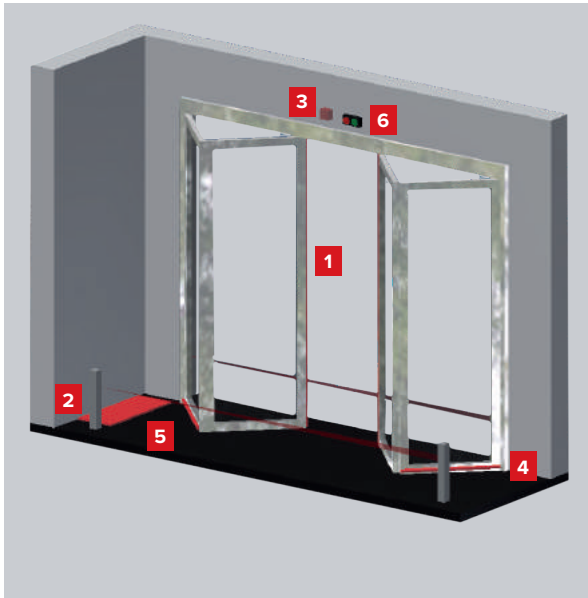


Doors operated by hand are equipped with an internal bolt lock mechanism and lock bars made of galvanised square steel installed in a concealed manner. Actuation via robust steel loop handles and a case lock integrated into the profile.



In case of a fire brigade or emergency rescue operation, every second counts. Here, a safe and smooth process is a pre-requisite. The mechanical fast automatic opening mechanism was especially developed for these requirements. Via manual unlocking, quick and safe opening of the doors in case of an emergency is guaranteed with stored spring energy and end position damping – even without power. At the customer's request, this unlocking can also be triggered via radio and drive.

### SAFETY EQUIPMENT FOLDING DOOR



#### Necessary for self-retention and/or two-way traffic:

- 1 Safety strip at the main closing edge
- 2 Light barrier or light grid
- 3 Signal lamp or traffic light red for automatic door closing

#### If the space to the wall or the adjacent folding door is less than 500 mm:

- 4 Transverse safety strip or
- 5 Contact mat

#### Additionally required in case of two-way traffic:

- 6 Traffic light red/green

### FOLDING DOOR DRIVE BASIC

|  |                    |                                    |
|--|--------------------|------------------------------------|
|  | Applicable for     | AL601F 2.0, AL602F, AL603F, ST602F |
|  | Supply voltage     | 230 V                              |
|  | Output max.        | 180 W                              |
|  | Opening speed      | approx. 13 s                       |
|  | Times opening/day  | max. 50 times                      |
|  | Leaf width         | max. 700 – 1,300 mm                |
|  | Leaf height        | max. 4,500 mm                      |
|  | Partition variants | 2+0 / 2+1 / 2+2 / 4+0 / 4+2        |
|  | Type of protection | IP54 standard, IP65 optional       |
|  | Control            | Dead man, self-retaining           |

- › Motor/transmission unit in robust aluminium pressure housing with permanent grease lubrication
- › Folding door runs smoothly and quietly
- › Soft stop in end positions
- › Continuous power adjustment
- › Reversing in case of encountering an obstacle
- › Self-locking transmission unit
- › Access door opening for pedestrian passage via button/radio
- › Adjustable delayed leaf motion
- › Automatic door closing can be switched on, with individual time setting
- › Easy retrofitting of existing systems and low-maintenance
- › Drive unlocking in case of power failure with rope pull from the floor

### FOLDING DOOR DRIVE POWER-F

|  |                    |  |
|--|--------------------|--|
|  | Applicable for     | AL602F, AL603F, ST602F   |
|  | Supply voltage     | 400 V  |
|  | Output max.        | 370 W  |
|  | Opening speed      | approx. 10 s   |
|  | Times opening/day  | max. 100 times   |
|  | Leaf width         | max. 1,200 mm (aluminium doors)<br>max. 1,300 mm (steel doors) |
|  | Leaf height        | max. 4,600 mm (aluminium doors)<br>max. 6,500 mm (steel doors) |
|  | Partition variants | 0+2 / 2+2  |
|  | Type of protection | IP65   |
|  | Control            | Dead man, self-retaining, two-way traffic                      |

- › Motor/transmission unit in robust drive housing made of light metal casting
- › Folding door runs smoothly and quietly
- › Self-locking transmission unit
- › Suitable for high frequency
- › Automatic door closing can be switched on, with individual time setting
- › Drive unlocking in case of power failure with rope pull from the floor
- › Digital limit switch for limitation of travel
- › Dead man: button OPEN - STOP - CLOSE
- › Self-retention: button OPEN - STOP - CLOSE, closing edge safety device, flashing light
- › Two-way traffic: button OPEN - STOP - CLOSE, closing edge safety device, one-way (traffic light red) or two-way traffic light control (traffic light red/green)



# INSTALLATION DETAILS

## FOLDING DOORS

|  | AL601F 2.0 |            | AL602F/SF |            |
|--|------------|------------|-----------|------------|
|  | vertical   | horizontal | vertical  | horizontal |
| Mounting in front of/behind the reveal (shown for 90° opening) |            |            |           |            |
| Mounting in the reveal (shown for 90° opening)                 |            |            |           |            |
| Corner mounting (shown for 90° opening)                        |            |            |           |            |

|                           | 90° opening<br>AL601F 2.0                          |  | 180° deflection (max. 3 leaves, manually operated)<br>AL601F 2.0 |                 |
|---------------------------|--|--|--|-----------------|
| Lateral space requirement |  |  |  |                 |
|                           | Note: required lintel requirement 310 mm           |  |  |                 |
|                           | L50/L50 NIRO<br>AL601F 2.0 / AL602F/SF / ST602F/SF | L50D<br>AL601F 2.0 / AL602F/SF / ST602F/SF | U50<br>AL601F 2.0 / AL602F/SF / AL603F/SF / ST602F/SF            | DA<br>AL603F/SF |
| Floor connection          |  |  |  |                 |

BF – Recessed floor guide | RA – Bolt stop | DA – Double bracket

|  | AL603F/SF |            | ST602F/SF |            |
|--|-----------|------------|-----------|------------|
|  | vertical  | horizontal | vertical  | horizontal |
| Mounting in front of/behind the reveal (shown for 90° opening) |           |            |           |            |
| Mounting in the reveal (shown for 90° opening)                 |           |            |           |            |
| Corner mounting (shown for 90° opening)                        |           |            |           |            |

|                           | 90° opening<br>AL602F/SF / AL603F/SF / ST602F/SF |  | 180° deflection (max. 3 leaves, manually operated)<br>AL602F/SF / AL603F/SF / ST602F/SF |   |
|---------------------------|--|--|---|---|
| Lateral space requirement |  |  |   |   |
|                           | Note: required lintel requirement 310 mm         |  |   |   |
|                           | L50D<br>AL603F/SF                                | RA<br>AL601F 2.0 / AL602F/SF / ST602F/SF | BF (optionally heated)<br>AL602F/SF / AL603F/SF / ST602F/SF                             | BF-light NIRO (optionally heated)<br>AL601F 2.0 / AL602F/SF / AL603F/SF / ST602F/SF |
| Floor connection          |  |  |   |   |





**SCHNEIDER**  
*Torsysteme*

**Alpha deuren Zuid-West**

Zeilschip 16

3991 CT Houten

Telefoon 088 254 81 20

[info@alphazuidwest.nl](mailto:info@alphazuidwest.nl)

[www.alphadeurennederland.nl](http://www.alphadeurennederland.nl)

Your SCHNEIDER consultant

**Alpha deuren Noord-Oost**

Oude Apeldoornseweg 37-b

7333 NR Apeldoorn

Telefoon 088 410 21 00

[info@alphanoordoost.nl](mailto:info@alphanoordoost.nl)

[www.alphadeurennederland.nl](http://www.alphadeurennederland.nl)

**FUNCTIONAL  
DESIGN**

[www.schneider.co.at](http://www.schneider.co.at)

